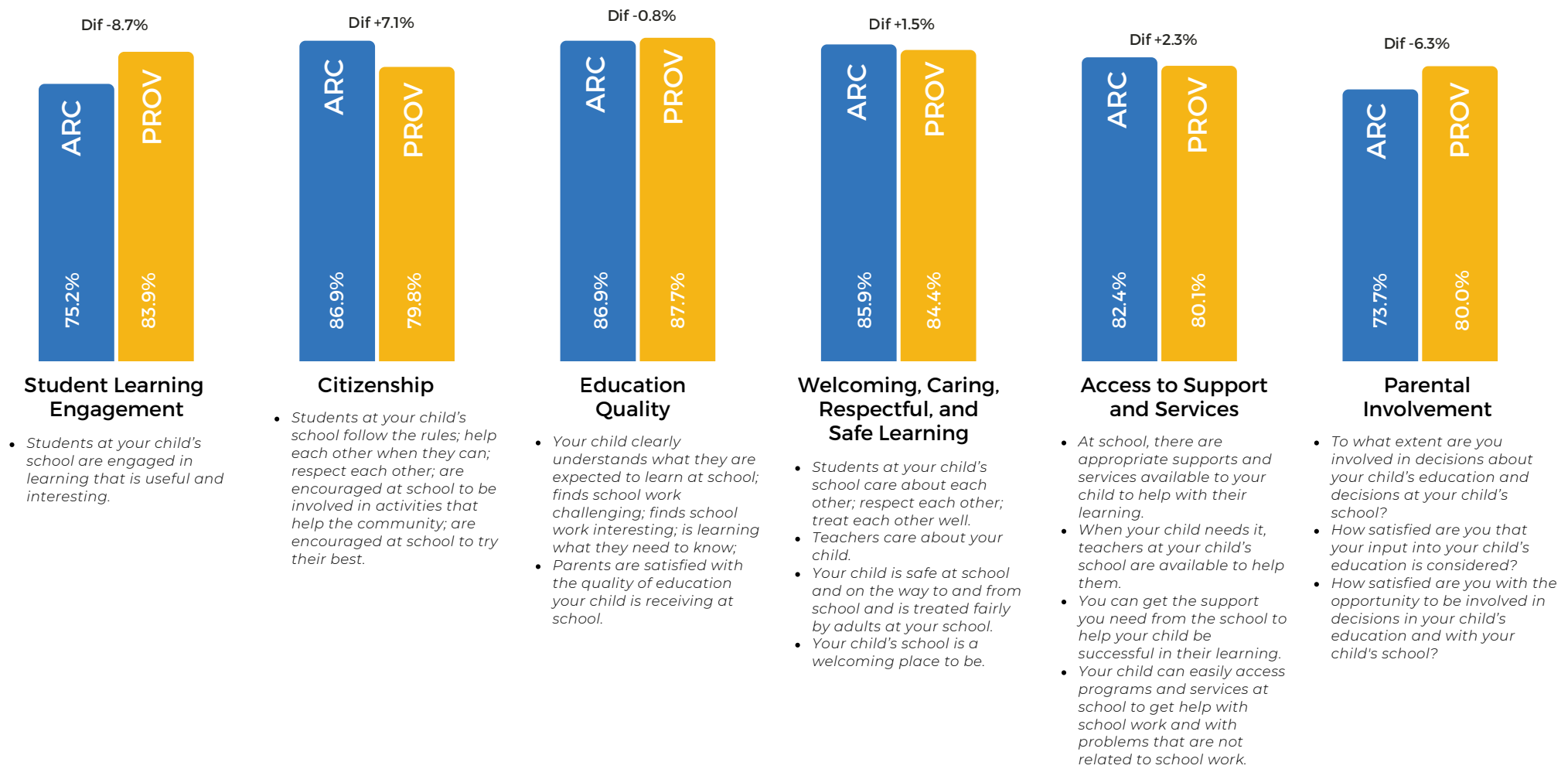


# ALBERTA ASSURANCE ANNUAL EDUCATION RESULTS

Alberta Education Assurance is a set of 12 performance measures calculated by Alberta Education for schools and school boards across the province. Schools and school boards are evaluated based on achievement, improvement, and overall performance.



[Click here for our full Annual Education Results Report](#)

## Faith Survey Results

**100%** *Percentage of students, parents, and teachers who indicate that they are satisfied with the relationship that exists between the school and the local Catholic parish.*

**100%** *Percentage of students, parents and teachers who are satisfied with the religious celebrations that are celebrated with the school.*

**93%** *Percentage of students, parents and teachers who are satisfied with what is being taught in religious education classes.*

**93%** *Percentage of students, parents and teachers who indicate they are satisfied with the efforts to live our Catholic Social Teaching at school.*

Assumption School shares daily faith experiences such as assemblies, religion classes, Masses, and good works projects. Staff are improving communication about routines and liturgical events while continuing strong partnership with Sacred Heart Parish.

## Insights

- **Education Quality:** Teachers are aligning vocabulary, instruction, and assessment practices to strengthen learning across grades. They focus on clear vocabulary teaching, reading comprehension, and mastery-based assessment to support consistent student growth.
- **Student Learning Engagement:** Student engagement is a priority, with aligned literacy and numeracy language and strategies across grades. Teachers offer choice, collaboration, and targeted supports like small-group work and Early Reading Intervention and Enhanced Reading programs.
- **Citizenship:** Student behavior has improved through emphasis on the school touchstone, Catholic Social Teachings, and faith-based modeling. Community projects like food bank drives, good works, mentorship, and volunteering strengthen respect and connection.
- **Parent Engagement:** Assumption School values parent volunteers and support. The school will enhance communication to increase involvement and awareness of daily routines.